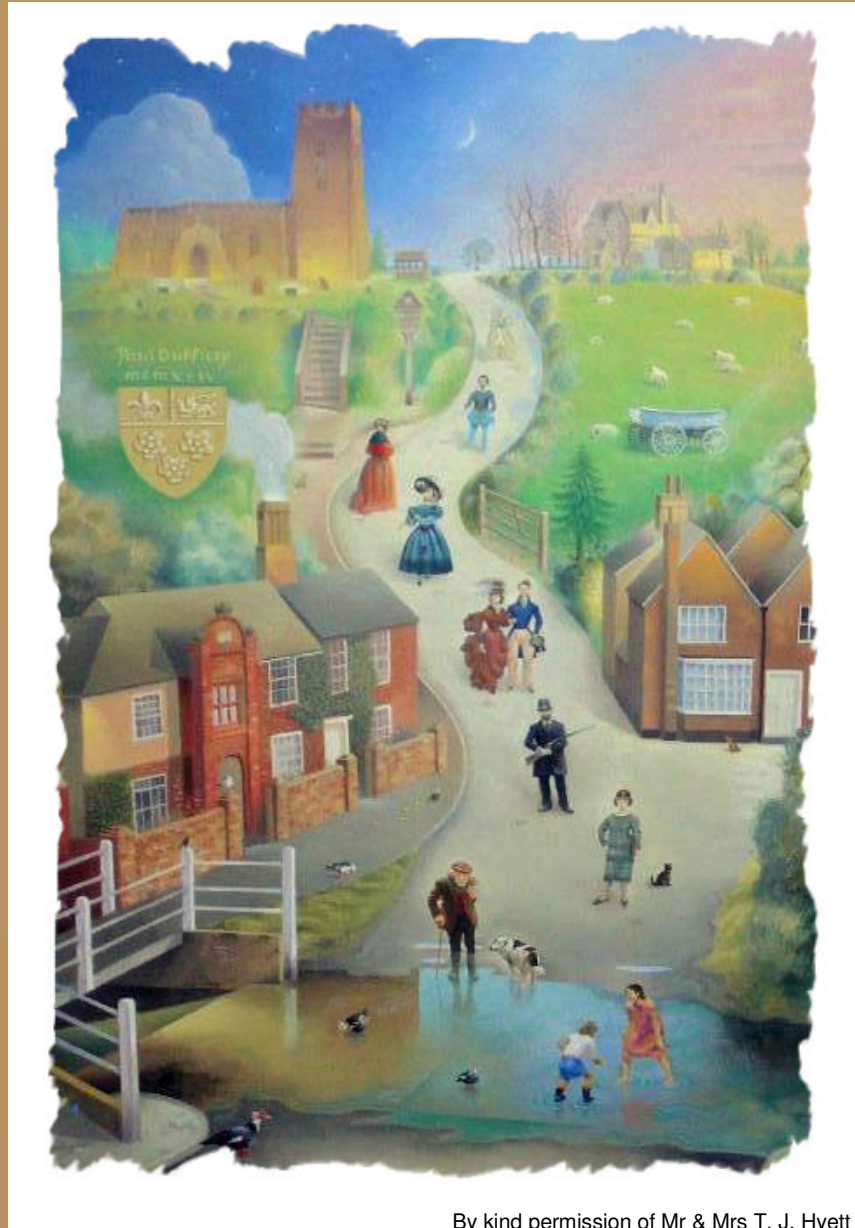


# 2008 KERSEY



By kind permission of Mr & Mrs T. J. Hyett

# PARISH PLAN

# KERSEY PARISH PLAN

## REPORT OF THE STEERING GROUP

### CONTENTS

<b>Acknowledgements</b>	1
<b>The Steering Group</b>	1
<b>Kersey Parish Map</b>	2
<b>Introduction</b>	3
<b>Report</b>	4
<i>Questionnaire Statistics</i>	4
<i>Highways Parking and Transport (2)</i>	4
Highways (2.1)	4
Parking (2.2)	5
Transport (2.3)	5
<i>Social Issues (3)</i>	5
<i>Retail Services (4)</i>	6
Post Office (4.1)	6
Village Shop (4.2)	6
<i>Sport (5)</i>	7
<i>Social &amp; Entertainment (6)</i>	7
Social Activities (6.1)	7
Village Hall (6.2)	7
<i>Information &amp; Communication (7)</i>	7
The Kersey Newsletter (7.1)	7
Kersey Website (7.2)	7
<i>Environment (8)</i>	7
Expansion of Kersey (8.1)	7
Rubbish Disposal (8.2)	8
Tidiness (8.3)	8
Public Signs & Lighting (8.4)	8
Environmental Issues (8.5)	8
<i>Further Comments (9)</i>	8
<b>Appendices</b>	9
1. Consolidated Answers to Questionnaires	
2. Action Plan	
3. Specimen Questionnaires	
4. Further Comments (Details)	

### ACKNOWLEDGEMENTS

The Steering Group is most grateful to so many of you who live in our parish and responded promptly and thoughtfully to our questionnaires. The high level of response (77%) has provided clear indications of your likes and dislikes without which no plan could be made. We are also indebted to Suffolk Acre for their unstinting help, advice and financial support which have enabled us to produce our Parish Plan without any cost to the parish. Last, but not least a big thank you to all those volunteers who did the legwork delivering and collecting questionnaires to meet the deadlines.

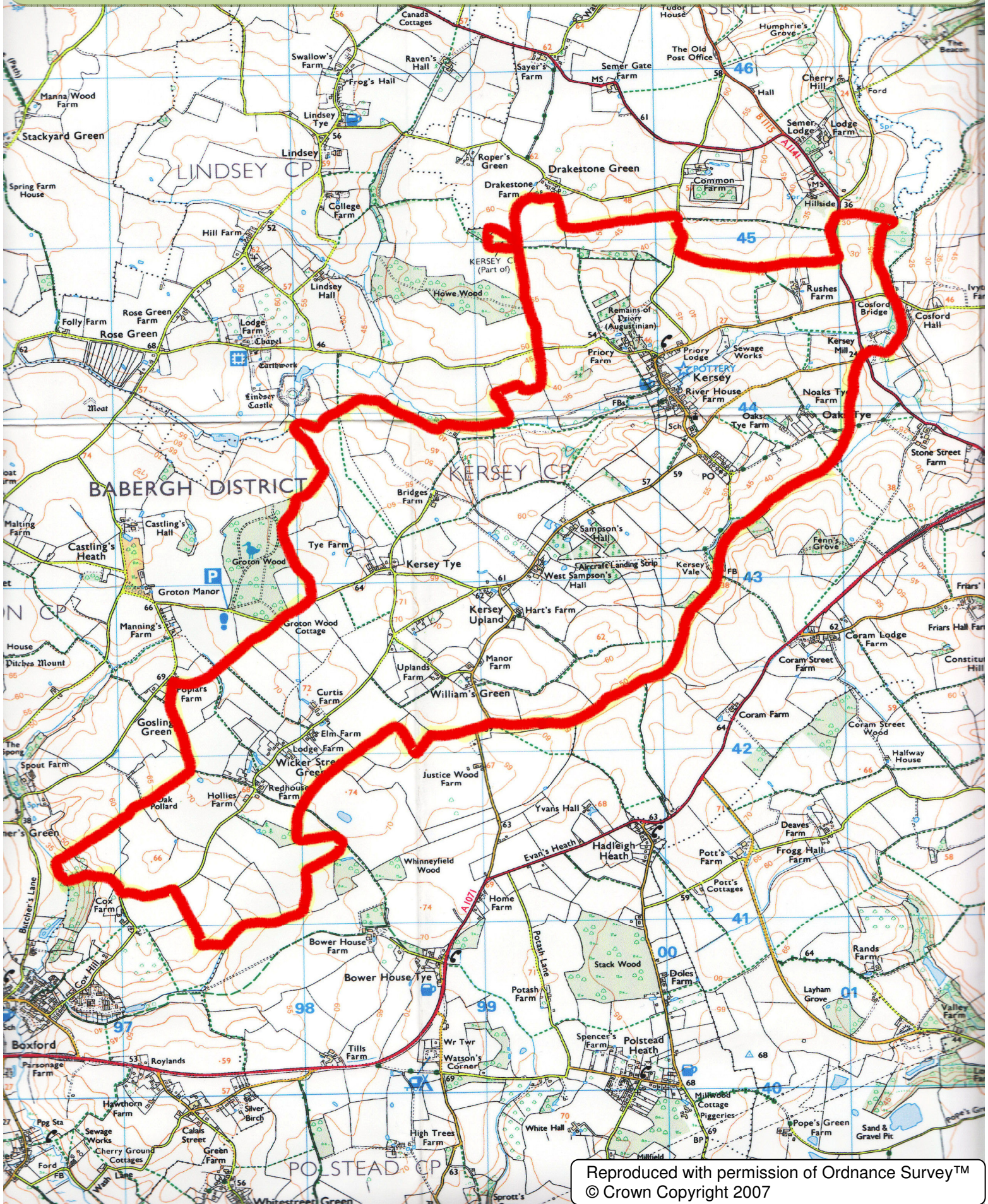


Kersey by moonlight, January 1940

### THE PARISH PLAN STEERING GROUP

John English	Marianne Lash	Linda Newbigging
Ian Hattrick	Alan Line	Paul Perrin
Christopher Judd	Yvonne Martin	Albert Walls

# KERSEY PARISH MAP



Reproduced with permission of Ordnance Survey™  
© Crown Copyright 2007

# INTRODUCTION

First a couple of reminders of

- the purpose of our Parish Plan and
- the steps taken to produce our Parish Plan

The purpose of our Parish Plan is part of a larger scheme trying to ensure that local councils and other bodies who provide local services are

- better coordinated
- responsive to our local needs
- delivered in ways which suit us and
- able to take account of the needs of our future generations

In other words to make the best of the resources available to us in Kersey. Success is not guaranteed but it will not be ours if we do not try.



Parish Plan drop-in event, July 1st 2007

The steps taken to produce our Parish Plan

- September 11<sup>th</sup>, 2006 – A public meeting was held attended by Suffolk ACRE who gave a presentation on Parish Plans
- September 19<sup>th</sup>, 2006 – The Parish Plan Steering Group was formed.
- In June 2007 158 parishioners completed the Initial Questionnaire telling us in broad terms what you thought was best and worst about living in Kersey and what improvements and changes you would like to see.
- In September using the answers we designed a detailed questionnaire which reflected the needs and concerns most commonly expressed in the Initial Questionnaire. The detailed questionnaire, collected in October 2007, was in two parts:-
- 'Household' completed on behalf of 124 households and 'Personal' completed by 252 individuals living in those households.
- From the answers to the detailed questionnaire an Action Plan was constructed which sets out what you wish to be done, by whom and who might assist. The Action Plan (Appendix 2) was formally presented to the Parish Council in March 2008.

The purpose of this report is two fold. First to set out what you, the residents of the Parish, told the Steering Group in your answers to the questions asked in the Household and Personal Questionnaires. Second to report what matters have been carried into the Action Plan based on those answers. That has been done relying exclusively on the numbers your answers provided. There is no element of interpretation or opinion involved on the part of the Steering Group or anybody else. Future consideration and action based on any particular aspect of the Action Plan will be for the Parish Council and others who have either the responsibility or show an interest in particular subjects.

(Note - For those of you who wish to see the numbers your answers provided see Appendix 1)

# REPORT

## QUESTIONNAIRE SUMMARY

- Questionnaires were delivered to 175 houses in the Parish
- 130 Household Questionnaires were returned (74.3%), of these 6 were blank
- 258 Personal Questionnaires were returned (77.1%), of these 6 were blank
- Where the questions needed an answer on the 1-7 scale most people gave a definitive response either agreeing or disagreeing. On average only 15% chose the midpoint '4' as their answer and the highest number of '4s' for a single question was only 67
- 60 people volunteered variously for 134 activities

## HOUSEHOLD QUESTIONNAIRE

- of 249 people who replied 139 are female and 110 male
- the number of respondents in three broad age groups are:-

Age Group	Respondents
0 to 19	52
20 to 50	87
51 to 85+	118

(A more detailed analysis is in Appendix 1)

- 13 people are disabled or house bound
- 18 people anticipate someone in their household needing an affordable home within five years
- 105 people work outside Kersey
- 103 people used a car to get to work
- there is a total of 158 cars owned in the Parish



## PERSONAL QUESTIONNAIRE

### **HIGHWAYS, PARKING & TRANSPORT (2)**

#### **HIGHWAYS (2.1)**

From

- 248 answers 118 (48%) were in favour of traffic calming measures in The Street and Church Hill
- 245 answers 159 (65%) were in favour of a 20mph speed limit in Kersey village
- 246 answers 138 (56%) were in favour of a 30mph limit in the rest of the Parish
- 246 answers 138 (56%) were satisfied with the condition of the roads in the Parish

*Recommended Action:*

*Parish Council to investigate possibility of introducing 20 and 30mph in conjunction with the Highway Authority Suffolk County Council.*

## PARKING (2.2)

From

- 245 answers 161 (66%) thought there were too many cars parked in the centre of the village
- 235 answers 105 (45%) would like to see a public car park in Kersey

Concerns about the number of cars parked in the centre of the village were based on

- road safety (133)
- access (106) and
- the look of the village (89)

There was substantial support for greater use of off road parking (209) but less than 50 in favour of yellow lines or parking penalties.

*Recommended Action:*

*Parish Council to promote*

- increased awareness of hazards and access issues caused by inconsiderate parking and*
- the use of all available off road parking spaces*



Queen's Golden Jubilee, 2002

## TRANSPORT (2.3)

Asked if they would regularly use public transport 80 said they would and 127 would not.

Similarly 70 would use a bus to Hadleigh that connects with buses to other destinations and 134 would not. Out of 16 people who used the services only 5 had a good experience of Dial a Ride or community bus schemes.

Finally in this section 37 people were prepared to join a driving scheme to assist villagers without transport but only 23 names were given.

*Recommended Action:*

*Identify and appoint a person to lead the driving scheme initiative and form a committee drawn from the list of volunteers.*



## SOCIAL ISSUES (3)

Out of 219 answers 170 thought there was a need for a Good Neighbour scheme in Kersey and 59 said they would help with such a scheme but only 30 names were given. 26 people indicated that they would appreciate help.

*Recommended Action:*

*Identify and appoint a person to lead the Good Neighbour initiative and form a committee drawn from the list of volunteers. Assistance may be available from Suffolk ACRE*



Celebrating the new village sign, 1987

## **RETAIL SERVICES (4)**

### **THE POST OFFICE (4.1)**

Since the questionnaires were completed the Post Office has been closed. The low level of regular use you recorded makes this decision unsurprising.

### **VILLAGE SHOP (4.2)**

There were 243 answers to the question 'How often would you use a village shop?' They break down as follows -

- Weekly 137
- Monthly 29
- Several times per year 49
- Never 28

29 indicated a willingness to help to operate a community village shop with 16 names given.

#### *Recommended Action:*

*Identify and appoint a person to lead the Village Shop initiative and form a committee drawn from the list of volunteers*



## **SPORT (5)**

The numbers of people who said they would be interested in participating in or supporting one or more of the following sports are

Keep Fit	48
Football	30
Tennis	41
Pool/Snooker	24
Cricket	40
Basketball	9
Table Tennis	37
Skateboarding	8

32 people indicated a willingness to help organise sporting activities in Kersey but only 13 names were given

#### *Recommended Action:*

*Identify a person to call a meeting of volunteers and discuss the advancement of these activities together with the possible formation of a Sports and Social committee embracing these and the social activities mentioned under that heading*

## **SOCIAL AND ENTERTAINMENT (6)**

### **SOCIAL ACTIVITIES (6.1)**

The numbers of people who said they would be interested in joining one or more of the following activities are

Monthly Films	62	Card Games	18
Book Groups	31	Dances	13
Concerts	30	Vegetable and Jam Sales	11
Photography Club	20		

31 people said they would help organise new social events but only 14 gave their names

#### *Recommended Action:*

*Identify a person to call a meeting of volunteers and discuss the advancement of these activities together with the possible formation of a Sports and Social committee embracing these and the sporting activities mentioned under that heading*

The 11 – 17 age group, 17 in number, were asked if they would like somewhere to meet regularly. 9 said yes and 8 said no. 16 people recorded a willingness to assist with organising youth activities.

#### *Recommended Action:*

*See above action and also potentially contact neighbouring Parishes for co-ordination of joint action on this subject.*

**VILLAGE HALL (6.2)**

Out of 243 answers:-

- 155 were satisfied with the Village Hall and 34 were not.
- 176 used the hall at least several times a year and 46 said they never used it.
- Among those involved in hiring the hall the belief was that the cost was fair.
- As to furnishings, heating, kitchen etc 114 out of 203 thought the facilities adequate.

The question was asked whether you would support investigation into the possibility of resiting the Village Hall and creating a combined sports facility. 94 said yes and 123 said no.

*No action is recommended however funding may be available to the village hall to improve facilities.*



**INFORMATION & COMMUNICATION (7)**

**THE KERSEY NEWSLETTER (7.1)**

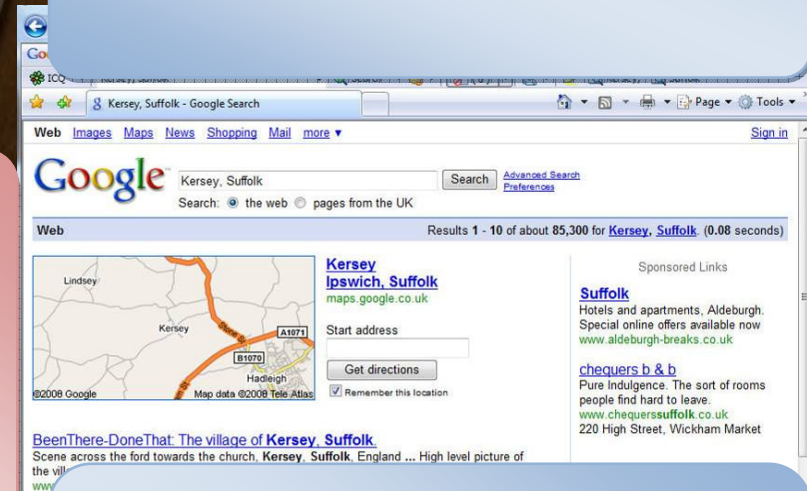
Out of 250 who answered 233 confirmed they read the Newsletter regularly.



**KERSEY WEBSITE (7.2)**

- 102 would access a village website regularly
- 32 would provide information for a village website regularly
- 14 would be prepared to join a steering group to introduce a Kersey Parish Community website but only 4 names were given
- 74 out of 207 believe there should be public internet access in the village
- of the 149 who had broadband access 101 are satisfied with the connection

*Recommended Action:*  
 Identify and appoint a person to lead this initiative and form a committee drawn from the list of volunteers with the aim of setting up a Parish website and possibly public access to the internet.



**ENVIRONMENT (8)**

**EXPANSION OF KERSEY (8.1)**

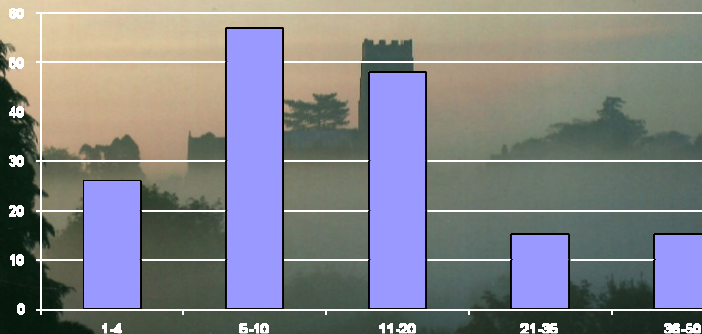
161 people approve of some carefully planned expansion and 86 do not. The range of acceptance of additional homes is –

Number of Homes	Accepted By
1 to 4	26
5 to 10	57
11 to 20	48
21 to 35	15
36 to 50	15

Also 18 people anticipate requiring affordable housing in the next 5 years.

*Recommended Action:*  
 Parish Council to liaise with Babergh District Council, Suffolk ACRE Housing Enabler and concerned Housing Associations

Q8.1.2 - I would accept the following no. of additional homes





### RUBBISH DISPOSAL (8.2)

- 171 consider the present bin collection schedule to be adequate against 50 who do not
- 170 people are satisfied with the range of items that can be recycled
- 96 think litter bin provision adequate against 74 who do not
- 157 believe dog litter bins should be provided against 61 who do not

#### *Recommend Action:*

*Parish Council to investigate installation of dog litter bins.*

### TIDINESS (8.3)

214 are satisfied with the general level of tidiness against 35 who are not. 58 would help a working party to tidy the parish regularly but only 20 gave their names. Only 116 would prefer to pay a small increase in Council Tax to have a person tidy the parish once a fortnight against 122 who would not. Only 86 are in favour of entering the village of the year competition.

#### *Recommended Action:*

*Parish Council to form a working party periodically to tidy the parish*



World's first wheelie bin race (wife or girlfriend in bin), 1988

### PUBLIC SIGNS & LIGHTING (8.4)

Only 64 think there are too many signs in Kersey and 115 who do not. 57 think there is too much lighting in the village and 125 do not.

### ENVIRONMENTAL ISSUES (8.5)

23 people would join a group to promote 'green' environmental issues. 10 names were given

#### *Recommended Action:*

*Identify and appoint a person to lead this initiative on green environmental issues and form a committee drawn from the list of volunteers.*

**FURTHER COMMENTS (9)**

59 people added further comments. 43 were to questions already in the detailed Questionnaires or were personal feelings of a more general nature which did not meet the test that they 'could be incorporated into a Parish Plan'. 16 raised matters which met the test or, for one reason or another, deserve comment or explanation. More details of these appear in Appendix 4.

It is important to remember that the detailed Questionnaires were based on the matters raised by significant numbers of parishioners. Some matters raised lacked the numerical support to justify their inclusion in the detailed Questionnaires.

A quote from an anonymous parishioner reflected the views of many:

*"Some parishioners should become more aware of the impact their actions have on village life i.e. how they park their cars, keep property/gardens in good condition, be aware of litter – don't walk past it, pick it up – be responsible for dog/pet nuisance. These little things help to enhance the community spirit of the village."*

Probably the ultimate meaning of being a 'good neighbour'?

*With apologies to the late President John F. Kennedy –*

*"ask not what Kersey can do for you; ask what you can do for Kersey"*



## APPENDIX 4 – FURTHER COMMENTS (DETAILS)

1. Out of the group of 16, the largest number (9) expressed disappointment, in one respect or another, at the lack of consideration shown to others e.g. in parking thoughtlessly or failing to use off-road space when it was available - leaving debris on roads and verges after hedge cutting - allowing dogs to bark for protracted periods - leaving posters and signs after the event they advertise - not making any contribution to village life but expecting someone else to get things done - running garden machinery late at night.

None of these matters lend themselves individually to consideration in a Parish Plan but collectively they suggest that the general subject of promoting civic awareness might be addressed.

2. 4 people advocated the undergrounding of telephone and electrical cables without specifying how much of the Parish would be included. This was investigated some years ago and at that time the utilities were unwilling to fund the operation. If there is a substantial level of support there is no reason why it should not be investigated again.
3. It has been suggested that there should be a footpath extending from opposite Church Walk along the south side of Mill Lane round the corner opposite the Old Vicarage into Vale Lane. Some years ago the Parish Council discussed this proposal with the highway authority who were unwilling to allocate funds for a footpath of regulation design. The Parish Council could be invited to consider whether alternative measures can be taken without the need for elaborate and expensive works.
3. Dissatisfaction was expressed that Parish Councillors were co-opted rather than elected. This is the inevitable consequence of less than eight people being willing to stand for the seven available seats on the Parish Council. At the moment there are only five Parish Councillors and two vacant seats. Perhaps those who raised this point should offer to stand as councillor?
5. Some suggested the Village Hall Committee should organise events for the community. The Village Hall Committee's responsibility is to manage the maintenance of the Hall for the benefit of the community. The hall is available for hire to any of those who wish to organise and hold events.