

# KERSEY PARISH NEWSLETTER

## MAY 2026



Reproduced courtesy of Tony Zurbrugg

In the garden Tulips grow  
Straight and golden, In a row  
Each one holds its empty cup  
Drinking rain and Sunshine up

# CONTACT NUMBERS

## Parochial Church Council

Vicar: Rev. Geoffrey Clement .....	revgclement@gmail.com	01473 657316
Secretary: Linda Newbigging .....		01787 210137
Church Warden: Rachel Wells .....		01473 822230
<b>Bellringers</b> – Bell Captain: Neville Whittell .....		07858 130955
<b>Forget-me-nots</b> – Organiser: Veronica Partridge .....		01473 823188
<b>Tuesday Club</b> – Rachel Wells .....		01473 822230
<b>Table Tennis Club</b> – Adrian Blyth .....		01473 827805

## Parish Council

Chairman: John Hume .....		01473 810098
Clerk to the Council: Sarah Partridge .....	clerk@kerseyparish.gov.uk	07765 916162
<b>Footpaths</b> – Chairman: Kevin Pratt .....		07854 390658
<b>Kersey Community Playground Committee</b> – Jonathan Mars .....		01473 822927
<b>Newsletter: Production, Editing and Advertising</b> - Colin Grannell .....		01473 829074

## Village Hall

Chairman: Philippa Harris .....		01473 827079
Secretary and Bookings: Natalie Blyth .....	nablyth1@gmail.com	01473 827805

## VPA (Village Produce Association)

Chairman: Pete Partridge .....		07901 913932
Secretary: Rachel Wells .....		01473 822230

## Grays Trust

Chairman: Mary Pearce .....		07947 079422
Secretary: Philippa Harris .....		01473 827079

**Nightingale Trust/Allotments** – Info: Natalie Blyth ..... 01473 827805

**School** – Joint Headteachers: Jess Damant and Claire Dunnell Paley ..... 01473 823397

**Kersey Playingfield Assoc. (Glebe)** – Mark Pertwee ..... 01473 810227

**Kersey Community Website** ..... [www.kerseyparish.gov.uk](http://www.kerseyparish.gov.uk)

**Hadleigh Health Practice** ..... 01473 822961

**West Suffolk Hospital** (Bury St Edmunds) ..... 01284 713000

**Ipswich Hospital NHS Trust** ..... 01473 712233

**Police** ..... The non-emergency number to call if you want to contact the local police is 101 (when it's less urgent than 999).

**Defibrillators:** There are THREE cPAD (Community Public Access Defibrillators) accessible 24/7 in the Parish. 1) The Bell Inn, Kersey IP7 6DY. 2) West Sampsons Hall Farm, Uplands, Kersey IP7 6EN. 3) Kersey Mill IP7 6DP. A further one is available at Kersey School IP7 6EG when the school is open.

**Newsletter Donation:** If possible please create a standing order or electronic payment to Kersey St Mary Parochial Church Council: 30-13-52 00694777 quoting KPN and your surname. Next content submission date: 22nd May 2026

# St Mary's Church

Dear Friends

On the 24th of May this year in the Church we celebrate the Day of Pentecost. It's a word that can sound a bit unfamiliar, so it's worth starting with what it actually means.

The word Pentecost comes from a Greek word meaning "fiftieth." Quite simply, Pentecost takes place 50 days after Easter. Easter is when Christians remember the resurrection of Jesus, and Pentecost comes seven weeks later, marking the next important step in the story.

On that day, Christians believe that the Holy Spirit — God's presence and power — came to the first followers of Jesus while they were gathered together in Jerusalem. Before this, they were unsure and even a little afraid. But after Pentecost, something changed. They became bold and confident, and they began telling others about Jesus. Because of this, Pentecost is often described as the "birthday of the Church," when the Christian message began to spread more widely.

You might also hear Pentecost called Whitsun or White Sunday. This name comes from an old tradition. In the early Church, people who were baptised at Easter would wear white clothes for the weeks that followed, up until Pentecost. The white symbolised a new beginning. Some people also connect the name with the word "wit," meaning wisdom, because Christians believe the Holy Spirit brings God's wisdom to guide and inspire people.

Pentecost didn't start as a Christian festival, though. It was already an important celebration in the Jewish calendar. For Jewish people, Pentecost also comes 50 days after Passover — a festival remembering the time when God rescued the Israelites from slavery in Egypt.

There are a couple of ways people understand its meaning in the Jewish tradition. Some connect it with the time between leaving Egypt (in the story known as the Exodus) and Moses receiving the Ten Commandments — laws that helped guide the people in how to live. Others see it as a harvest festival, marking the end of the grain harvest season and a time of thanksgiving.

So, when we celebrate Pentecost in the Church, we are joining a story that stretches back a long way. It links together themes of freedom, guidance, gratitude, and new beginnings.

For Christians today, Pentecost is a reminder that faith is not just about remembering the past. It is about being inspired and guided in the present — having the courage to live well, to care for others, and to share the good news of Jesus in the world.

Have a great month of May and Happy Pentecost to you all.

Yours Geoffrey

## St Mary's monthly coffee morning

The first coffee morning took place on Wednesday 15th April. Those who attended found it a perfect way to meet fellow Kersey residents. For some it was an opportunity to catch up with friends and neighbours, and for others a way of meeting new people. We were even joined by two American ladies touring the UK and seeking out our church as part of their journey. Due to diary clashes, coffee mornings will now take place on the second Wednesday of the month (not the third). The next one will be on 13th May from 9am to 12pm. Come along to the church and meet up with other villagers for a chat with coffee and cake.



## PAROCHIAL CHURCH COUNCIL

### Church Clergy

Rev Geoffrey Clement  
01473 657316

### Church Officials

Rachel Wells: Church Warden 01473 822230  
Linda Newbigging: Secretary 01787 210137  
Colin Grannell: Treasurer: 01473 829074

## St MARY'S CHURCH SERVICES

Celtic Morning Prayer: every Tuesday at 9.30am			Rev Geoffrey Clement
3rd May	11.00am	Holy Communion	Rev Geoffrey Clement
10th May	11.00am	Parish service	Rev Geoffrey Clement with Jenny Partridge
17th May	6.30pm	Evensong	Rev Jim Sephton
24th May	11.00am	No service at Kersey: Aldham Church	
31st May	10.00am	Benefice Holy Communion Chattisham	Rev Geoffrey Clement and Rev Jim Sephton
7th June	11.00am	Holy Communion	Rev Geoffrey Clement

# St Mary's Church: Parochial Church Council

The PCC met on 13th April at 1 Vale Corner.

Safeguarding was discussed and reviewed, and Linda Newbigging was appointed Parish Safeguarding Officer alongside her PCC Secretary role.

Services are planned through to July. The Archdeacon's visitation service is scheduled on 2nd June at 7.30pm, and the arrangements are being worked through. A monthly Parish coffee morning took place on 15th April from 9am to midday. Due to diary clashes, they will now take place on the 2nd Wednesday of the month (not on the 3rd). The next one will be 13th May 9am to 12pm.

The church accounts were shared and discussed. We must continue to be prudent while ensuring the church is welcoming to all visitors. Further discussions with FOSM are planned to agree expenditure on essential maintenance and repair projects, with special attention to the North wall soakaways and a review of the oil boiler. The contract with the Churchyard gardener was agreed at £120 per visit. A long telephone meeting with Ecclesiastical Insurance took place in February. The building and roof alarm insurance combined is our biggest single expenditure approaching £4,000 per annum. The building is insured as befits its Grade 1\* listing and there is little we can do to reduce this cost.

## Updates:

After some discussion we finally received the VAT balance on the installation of the new lights which was a great relief.

Our second quote for the cleaning and repair of the village clock mechanism and installation of two electric winding motors has been received. There is a limit to the companies able to complete this work and these two quotes will now be assessed. The VAT recovery scheme for Listed Places of Worship is still under national discussion so we may have to assume it is unavailable. In which case the costs will be between £15K - £20K depending upon the options available. We will consider the best way to engage with the village community to agree next steps. The Scary Suffolk Stories event took place in the church on 18th April and was greatly enjoyed by the sell-out audience, who were also able to view the new lighting system.

## DIARY DATES

5th May 6.15pm	T club meal	The George
11th May 7.30pm	Parish Council AGM	Village Hall
19th May 7pm	Parochial Church Council	St Mary's Church
23rd May 2.30pm	Suffolk Guild of Ringers	SW district practice
2nd June 7.30pm	Archdeacons Visitation	St Mary's Church
3rd June 7.30pm	T club Willow weaving	Village Hall
13th June 4pm	Visiting ringers	St Mary's Church
21st June 3-5pm	Pimms & Strawberries	The Glebe

## A little bit of history....

### St Mary's Kersey: The Pre-Reformation Church

Before the Reformation in the 1540s, the interior of the church had a very different appearance, with bright vivid colours used on fabric hangings, altar cloths, vestments, wall paintings, stained glass, painted tabernacles or niches and statues of saints.

Running across the church, level with the chancel arch, from the south wall of the nave to the north wall of the aisle was the rood screen, supporting a loft or walkway across the top.

Life size figures of the crucified Jesus on the cross (Rood) flanked by St Mary and St John stood on the loft in the chancel arch. Another set of rood figures may have stood on the loft in the aisle. The screen, loft and figures were painted and gilded. John Pusk gave £10 in 1463 '...to paint the candle beam' or rood loft. Six painted panels from the screen are now in the north aisle. The eastern bay of the nave roof was painted as a canopy of honour over the rood figures. The stairs which gave access to the rood loft, survive in the external turret.



This remaining section of a much larger rood screen is probably one of the oldest and most valuable artefacts in the church. Whenever we submit a Faculty or the church is reviewed by interested third parties, it is this Rood Screen that attracts the most attention. We are accountable to Historic England for its safe keeping.

# Kersey Village News

## **BENCH**

A bench has been placed in the churchyard by the family of the late Tony Wells.

## **SYMPATHY**

We have just heard of the passing of Joan Hattrick. The funeral service will be at St Mary's on 11th May at 11.00am. Our sympathy goes to all the family at this sad time.

## **TUESDAY CLUB**

Do you know where Uruguay is?

This was what members were asked at the April meeting when Rev Geoffrey Clement came to talk about his experience from Westminster Abbey to Montevideo, Uruguay. We discovered it was a small country in South America between Argentina and Brazil. Originally he was asked if he would like to volunteer to go to Montevideo to help at the local church, with building work and various other projects. Photos included their living conditions, families, the churches and the famous football stadium. It was Uruguay where the first FIFA World Cup was held in 1930 which the home team subsequently won. We were also shown a photo of the large famous meat processing plant at Frey Bentos. Whilst out there he became ordained and many years later is now our parish priest. It was a very interesting and entertaining meeting.

Competition for "a flower" was won by Frances Whymark.

We are next meeting on Wednesday 5th May at 6:15pm at The George in Hadleigh for our annual meal. There will be no competition.

The June meeting will be on Wednesday 3rd when we will have a talk on the History of Willow Weaving with members participating. The competition is for a "basketry item". Anyone is welcome to come along to the meeting and it would be nice to see some new faces.

## **CONGRATULATIONS**

Congratulations to Sarah Williams and Stuart MacQuaker on their wedding on 14th April at the Old Royal Naval College, Greenwich. We wish them every happiness in the future.

## **COFFEE MORNING**

The new monthly coffee morning will be on the second Wednesday of the month. The next one will be on 13th May from 9am to 12noon. Come along to the church and meet up with other villagers for a chat with coffee and cake.

## **CHURCH CLEANING**

Week beginning 11th May      Marvin Kuzamba and Esme Chapman

Week beginning 25th May      Sue Jones and Lynn English

## **RAINFALL**

Up until the 22nd April only 3mm of rainfall was recorded in Vale Lane

Rachel Wells

# PARISH COUNCIL

A Parish Council meeting was held on the 13th April.

**Present** were J Hume chair, four councillors, Babergh District Councillor, clerk and three members of the public.

**Apologies** received from two councillors.

**Declaration of interests** One councillor declared an interest in a planning application.

**Minutes** of March meeting were approved and signed.

**Parish forum** A concern was raised about contractors working at 3-6 The Street parking in the street rather than behind the properties as agreed. The clerk will contact the owner. A concern was raised about dog owners not clearing up after their dogs. Dog bags should be taken home or put in the bins provided, not put in the hedgerows or left on verges.

**Planning progress** Cherrywood. Following an appeal by the applicant, this application has now been approved.

Barn South of Water Lane. Erection of self build dwelling following demolition of barn. Babergh has granted permission.

The Mount. Babergh has granted permission for alterations.

**Planning applications received** Wickerstreet House. Erection of a greenhouse.

Councillors considered this application for a timber framed greenhouse. They resolved to fully support as this was in keeping with its surroundings.

Acorns. Erection of front and rear extension with internal alterations. Councillors fully supported this application.

**Finance** All papers, which had been circulated to councillors before the meeting, were approved.

Consideration was given to contributing towards repairs and renovations of the turret clock at St Mary's Church. At the last meeting the Church Treasurer had outlined plans for the required repairs. The clock is 100 years old and there is an opportunity to renovate and convert the clock from manual winding to an electric motor. This would resolve the problem of volunteers having to wind the clock each week. However, this work would be at a considerable cost. Councillors agreed electric was the best way forward but agreed that they would only be able to give a small amount. Councillors suggested the PCC investigate grant options including Babergh, horological and Victorian grant funders.

**Agree content for newsletter** The chairman will draft an article about living in a conservation area with listed buildings.

**Next meeting 11th May** which is the Council's Annual Meeting.

A full report can be found on the website.

Rachel Wells

## Mobile phone signals in Kersey

The Parish Council is endeavouring to support the improvement of mobile phone signals across Kersey, which for some areas is very poor or non-existent. It seems to be assumed by network providers that Kersey generally has good signals, which from the evidence the Parish Council has heard is not the case. Therefore, the Parish Council would encourage all residents who have issues with their mobile signal to make direct contact with their network provider to tell them. Network providers need to be made aware of the problem. This will become even more important when the landline network is switch to all digital by January 2027. Digital landlines and Wi-Fi calling via your broadband require a power supply; they will not work during power cuts, when emergencies could be more likely. The Parish Council is advised that it could help to support improvements across the parish if network providers receive multiple reports.

Please report poor signals to your network operator.

Sarah Partridge

## Dog Fouling

Just a gentle reminder to dog owners  
- please clear up after your dogs.

Concerns have been raised about an increase in dog mess found on footpaths across and beside fields, as well as bags of poo left in undergrowth and hanging on hedges! This is littering and a health concern for wildlife and those working in, and visiting, the countryside.

Please clear up after your dogs.  
It's the law!

## Village Produce Association

The next VPA outing is to Anglesey Abbey on the 18th July.

For details, please contact Marvin on 07561080102 or email [marvin.kuzamba@gmail.com](mailto:marvin.kuzamba@gmail.com)

**CHIMNEY SWEEP  
SFS SUFFOLK**

**Chris Wright**

**07500 046899**



**enquiries@sfssuffolk.co.uk**

**Based in Kersey •  
Clean Reliable Service •**

## KERSEY VILLAGE PRODUCE ASSOCIATION

### MARQUEE HIRE

AT VERY COMPETITIVE RATES FOR ALL YOUR FUNCTIONS

40' x 20' Traditional Pole Marquee

30' x 15' Clear Span Frame Marquee

For details, prices and bookings call Rachel on 01473 822230

**BABY SITTING SERVICE:** Provided in Kersey, contact Hebe McQuaker on 07950136157 or hebemcq@icloud.com



Established 1986

## COMMAND

### PEST CONTROL

Rats, Mice, Wasps, Bees,  
Ants/Insect Control  
Rabbit and Mole Control  
Timber Treatment/RisingDamp

ALL TYPES OF PEST  
CONTROL UNDERTAKEN

01787 248049

## A K SERVICES

SEPTIC TANK  
EMPTYING

DRAINS  
CLEARED AND  
SURVEYED

TREATMENT  
PLANTS SERVICED  
AND CLEANED

*Tank Emptying from £80*

Tel: 01473 822694

Mobile: 07891 341645

[www.akservices.co.uk](http://www.akservices.co.uk)

## News from Kersey Primary School



### **Oak (Years 4, 5 and 6)**

Some of Oak Class recently took part in a swimming gala in Hadleigh, representing the school with great enthusiasm and determination. The children showed fantastic effort in all of their races, demonstrating both their swimming skills and excellent sportsmanship.

They supported one another brilliantly, cheering their teammates on and celebrating each other's achievements. We are very proud of their positive attitudes and the way they represented our school so well.

### **Sapling (Years 2 and 3)**

Sapling Class recently held a bake sale after school to raise funds for their class, and it was a wonderful success! The money raised will go towards supporting resources and experiences for all of the children in the class.

We would like to say a big thank you to everyone who kindly provided cakes and treats—your generosity made the event possible. The children were very excited to take part and it was lovely to see so many families supporting them.

### **Acorn (EYFS and Year 1)**

Just before the Easter holidays we visited Bridges Farm. The children had an amazing time exploring and learning outdoors. They took part in lots of exciting activities including identifying different groups of animals, learning about life cycles, creating beautiful bark rubbings and even building their own nests. It was fantastic to see their curiosity, teamwork and love of nature shining through all day long.

**If you would like to know more about Kersey School or would like to arrange a visit, please ring the office on 01473 823397, email [kerseyoffice@tilian.org.uk](mailto:kerseyoffice@tilian.org.uk) or visit our website [www.kersey.suffolk.sch.uk](http://www.kersey.suffolk.sch.uk).**

### **Do you follow us on social media?**

Instagram - [kerseyprimaryschool](https://www.instagram.com/kerseyprimaryschool)

Facebook - [@KerseyPrimarySchool](https://www.facebook.com/KerseyPrimarySchool)

X - [@KerseyPrimary](https://twitter.com/KerseyPrimary)

*'On a journey together.'*

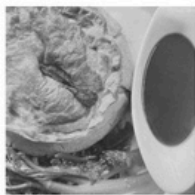


# The Six Bells

Preston St. Mary



Situated in the heart of the beautiful Suffolk countryside, The Six Bells is a charming grade 2 listed pub that prides itself on a warm welcome, local cask ales and fantastic homemade food. We are locally owned & locally run and we believe in providing a great taste of Suffolk life- from local artists on the walls to the local produce on our plates



## Food served:

Wednesday-Saturday  
12pm-2pm • 6pm-8pm  
Sunday  
12pm-3:30pm

Call us on 01787247440 or email  
[reservations@thesixbellspreston.com](mailto:reservations@thesixbellspreston.com)



@thesixbells\_



[thesixbellspreston.com](http://thesixbellspreston.com)



The Six Bells, Preston St Mary

## Antique Renovations



**EXPERTS IN ANTIQUE  
FURNITURE RESTORATION**

UNIT 1, BRIDGE FARM,  
LAVENHAM ROAD,  
BRENT ELEIGH,

SUDBURY, SUFFOLK, CO10 9PB

**Tel: 01787 248511**

## FIREWOOD

### BARN STORED DRY LOGS

Various loads available  
or bags at £15.00  
each

### KINDLING

**Call Carol Abbott on  
07768 795981**

# R. GWINNELL & SONS

Independent Family Funeral Directors

*“Where your family’s wishes are paramount”*

*All types of funerals arranged, any area.  
Traditional service, black Rolls Royce fleet.  
All types of memorials made in our own workshops.  
Memorial renovations and additional inscriptions.  
Under the personal direction of the Gwinnell family.*



High Street, Hadleigh.  
**01473 824440**

24 Hours  
contact@gwinnell.co.uk



## **Farming Notes April 2026**

### **Arable**

We seem to be managing without Adam, who left in January. The dry weather has helped Ryan to be timely and get fertiliser, spraying and spring drilling done in good time, as he's had no delays with rain. However, we are now in serious need of rain to keep potential yields of everything from OSR to silage on course. The weather pattern already looks similar to last year when the drought caused a fairly severe reduction in yield, hence less income. Match this with increased fuel prices, huge increases in fertiliser costs and reducing cereal sale prices this year, and things don't look particularly rosy on the short to medium term. However, being the eternal optimist (essential in farming!) I am sure something will occur to put things back on course. As I approach my 76th year, I have no qualms in increasing my time away from the farm and am currently visiting a friend in South Africa. Perhaps more on this next month, depending on what I find and see on that continent.

### **Livestock**

Although calving and lambing are virtually completed (one ewe and one cow still to produce!), the workload doesn't seem to get any lighter. Getting most of the stock out to grass does help, but before that is done fences have to be checked and repaired and foot trimming and vaccinations of stock carried out. We favour electric fences on most of the farm. These are mainly powered by mains fencing units based here at Bridges. These units let out very short high voltage pulses and even quite dense greenery does not weaken the power very much. The power is supplied to the fields along steel wires which are attached using insulators to the existing, and in some cases, dilapidated traditional fences. If at any point the electric wire touches the old steel fence wire, virtually all the power is lost to earth and the fence can be less effective once the livestock realise. However, when working, the electric fence is very reliable and the stock hardly ever get out - unless a gate is left open. I check the electric fences daily with a gadget, which I always carry, that beeps when near a live fence. If anything, I hate getting accidental electric shocks even more than the cows but it still happens too often!

We have just reached our annual high in terms of stock numbers with 181 cattle and 162 sheep on the farm. Both of these will gradually reduce through the summer as we sell finished cattle at market for meat and breeding bulls go to Cogent. Lambs will also be sold for meat from about 4 months of age as well as some of last year's rams which go for breeding.

Thanks to everyone who supported our charity farm fun day on Easter Saturday. We welcomed over 100 families to the farm and raised £1,500 for charity (our best so far!). It was a lovely sociable day and we are grateful to the FoSM team who did the catering. Incidentally, Supernova the British Blue bull weighed 1136kg.

# amor interior design



INTERIOR DESIGN



CORNER SOFAS & SOFAS



CHAIRS



CURTAINS



BLINDS



REUPHOLSTERY



HEADBOARDS



FABRICS



WALLPAPER

Contact us to arrange a consultation with our design team.  
Tel: 01787 880908 • Email: [sales@amorinteriordesign.co.uk](mailto:sales@amorinteriordesign.co.uk)  
9 Friars Street • Sudbury • Suffolk • CO10 2AA



[www.amorinteriordesign.co.uk](http://www.amorinteriordesign.co.uk)



## **Kersey: March Crime Overview**

This month I am going to write about some common scams, provide some advice on what to do and where to report them.

A scam is a person trying to trick someone out of money or something else of value. Scams are a type of fraud, so are illegal and a crime. A scam can occur face to face but the vast majority are now remote via phone call/text/email/social media and tactics used by criminals can now include voice cloning. A local police force, such as Suffolk Constabulary, would typically become involved in this type of fraud where there is a vulnerable victim or there is a local suspect and/or the scam is in progress and we can prevent it or catch the criminal. If someone is at an address trying to scam someone, or someone is expected at an address imminently, then call 999. In circumstances where the danger is over, call 101 or make an online report at [www.suffolk.police.uk](http://www.suffolk.police.uk).

### **Phishing scams**

These are a common type of scam now. They could be claiming they are police, the council, your bank, a parking company demanding money for a fine, or a relative that has lost their phone and needs money in an emergency. Never click on any links, treat them with scepticism especially if they are in a hurry or requesting money, and don't reply. If visiting a website, find it online to make sure you visit the real one, don't follow a link on an email even if it looks genuine. Make sure the website has the locked padlock symbol next to the address line indicating it is secure and your data is less likely to be intercepted. Get a second opinion from someone and aim to call the company or organisation back via a number you find (not a number they have provided).

Ultimately, you need to be automatically suspicious of any contact, particularly if a request for something of value is involved, such as money, gift vouchers, jewellery, or gold. The scams are getting more sophisticated, with research being done before the contact, they could even pretend to be someone you know. Voice cloning is also a growing threat. If a scammer does enough research and has the tools, they could contact a person via phone, clone their voice when they talk, then contact a friend of that person and impersonate them during a voice call. It is best now not to even answer suspected scam calls, let them go to voice mail and assess from there.

### **Where to report phishing scams**

- With suspicious phone calls and text messages, text the originating number to 7726 or forward the message to 7726, free of charge. This alerts your phone service provider, and they will shut down the number and may block it for you as well.
- Forward scam/phishing emails to [report@phishing.gov.uk](mailto:report@phishing.gov.uk). They will take action to analyse the email and any links, investigate websites and aim to remove or block.

The more people that send information, the more the volume of scams will be reduced.  
Kind regards, PC 1293 Johnson - Community Police Officer

## FRIENDS OF ST MARY'S 500 CLUB LOTTERY

Latest 500 Club draw results: **April 2026**

1st Prize Colin Grannell

2nd Prize Karen Freeman

3rd Prize Pascoe Gibbons

Congratulations to the winners and thanks to everyone in the Club.

### The FOSM Annual General Meeting

The AGM took place in the Bell Inn on Tuesday 31st March at 6.00pm.

Net income after costs for the year was reported by the Treasurer at £4,004.51.

This was raised through the 500 Club, FoSM membership and three events.

During the year, we donated £3,493.73 towards the overall sum of £15,000 that we have agreed for the new church lighting project. There were no changes to the Trustees.

We would like to thank our sponsors Nevelli Designer Home Heating & Interiors and BGA Print for their continued support.

Anyone interested in becoming a Friend of St Mary's or in joining the monthly 500 Club lottery, please contact Mark Pertwee, Treasurer on 07919 166782 or email [fosmkersey@gmail.com](mailto:fosmkersey@gmail.com).

### Open Farm Day

We were thrilled to raise £1,554.94 running a tea stall and BBQ at this year's open farm day at Bridges Farm. It was a fun family day out and the weather was kind.

Huge thanks go to Chris and Sarah Partridge for hosting the day, and to all our volunteers, who helped out.

## Tree work? Read this before you pick up your saw!



Most of the central part of Kersey is in a Conservation Area and if you live there you may not know that the trees in your garden are protected by law. It's worth knowing the details before you do anything, as getting it wrong can result in a serious fine. Ignoring the rules is a criminal offence. Fines can reach £20,000 in a Magistrate's Court and are unlimited in a Crown Court.

Trees in a Conservation Area with a trunk diameter of 75mm or more at 1.5 metres above the ground are **AUTOMATICALLY PROTECTED**. A separate Tree Protection Order (TPO) is not needed as the Conservation Area designation is enough. That will cover most of the mature trees in gardens, drives and boundaries in the central part of the village.

Small diameter trees of less than 75mm are not covered and the threshold rises to 100mm if thinning trees to encourage others to grow. There are exceptions for orchards but best to check first.

The law is clear. You cannot cut down, lop, top, uproot, willfully damage or destroy a protected tree or its roots without first notifying Babergh District Council( BDC). This applies whether it is your tree or not, if it's a DIY job or hiring a contractor.

Before starting work on a protected tree, you must submit a Section 211 Notice to BDC at least 6 weeks before the work begins. If you hear nothing after six weeks, you are free to get on with it - but keep a copy of your Application!

To get advice, contact the BDC Arboricultural Officer on 0300 1234000, Option 3 or [customer.services@baberghmidsuffolk.gov.uk](mailto:customer.services@baberghmidsuffolk.gov.uk).

There is also an interactive online map at [Babergh.gov.uk](http://Babergh.gov.uk) which shows if a tree or area is covered by TPO.

Kersey Projects invites you to join us for  
**Pimm's and Strawberries  
on the Glebe**



on

**Sunday, 21 June 2026  
3.00 - 5.00 pm**

- We will be serving a complimentary welcome Pimm's and strawberries. Please feel free to bring your own additional drinks.
- Sarah Louise, a local singer and songwriter, will be entertaining us with a mix of familiar songs and some of her own compositions.
- This is a ~~free event~~ that will take place on the Recreation Ground with the marquee kindly provided by the VPA. Limited seating will be available.
- Please register by 12 June to confirm your attendance and ensure you are included in the numbers for catering.

We look forward to seeing you there!

RSVP: [kerseyprojects@gmail.com](mailto:kerseyprojects@gmail.com)



Weddings, Parties, Trade Shows,  
Business Functions, Conferences,  
Furniture Hire

Suffolk Based: 01473559978:info@allseasonsmarquees.co.uk



# Chapman Stickels

*Suffolk and North East Essex*

Providing unrivalled local knowledge, combining traditional service with a modern marketing approach



**[chapmanstickels.co.uk](http://chapmanstickels.co.uk)**

01473 372 372

[info@chapmanstickels.co.uk](mailto:info@chapmanstickels.co.uk)

The Corn Exchange, Market Place, Hadleigh IP7 5DN

*Part of Investeq Holdings Limited*